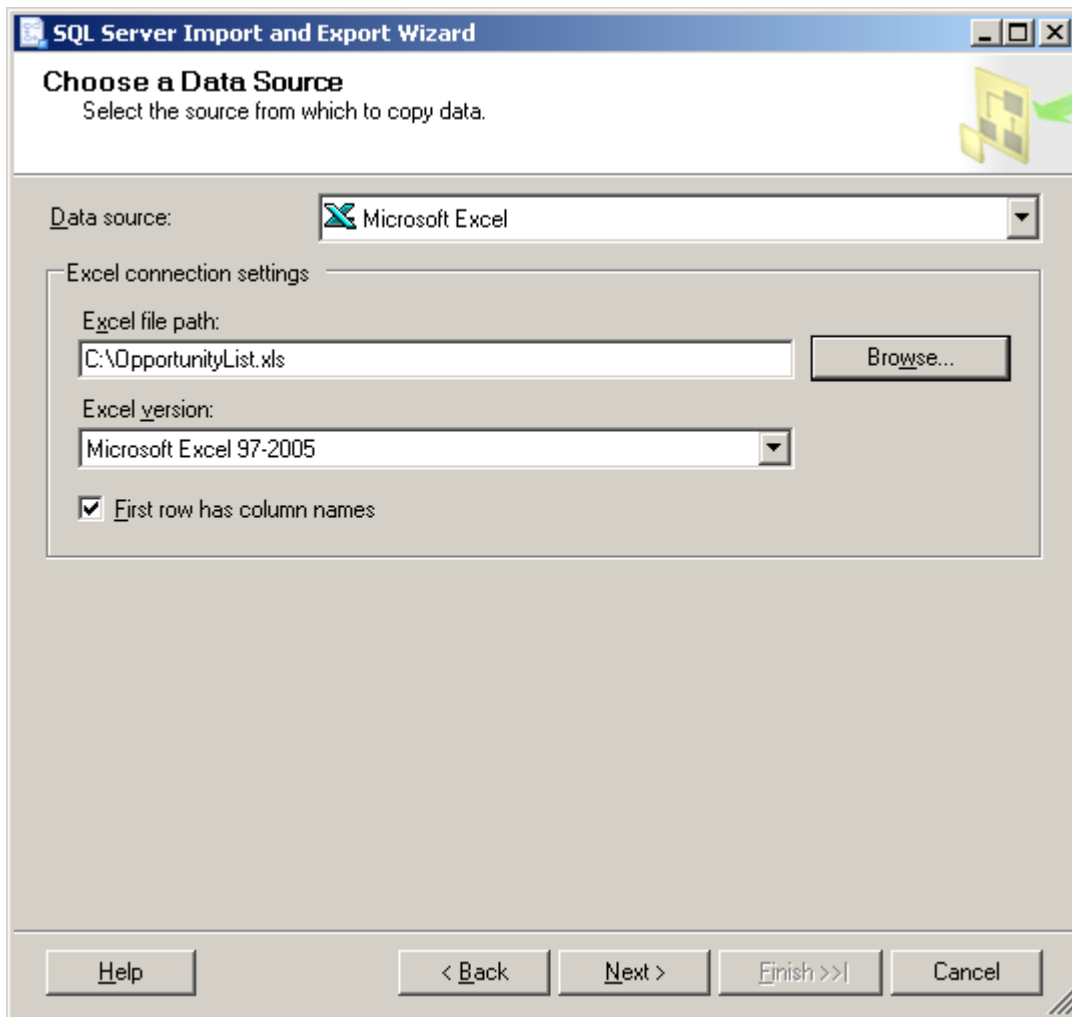


Importing data into CRiMport staging database using Microsoft® SQL Server Import/Export Wizard

To use Import/Export wizard you must have SQL Tools installed. If you don't have SQL Tools on your machine you can install them from Microsoft SQL Server media.

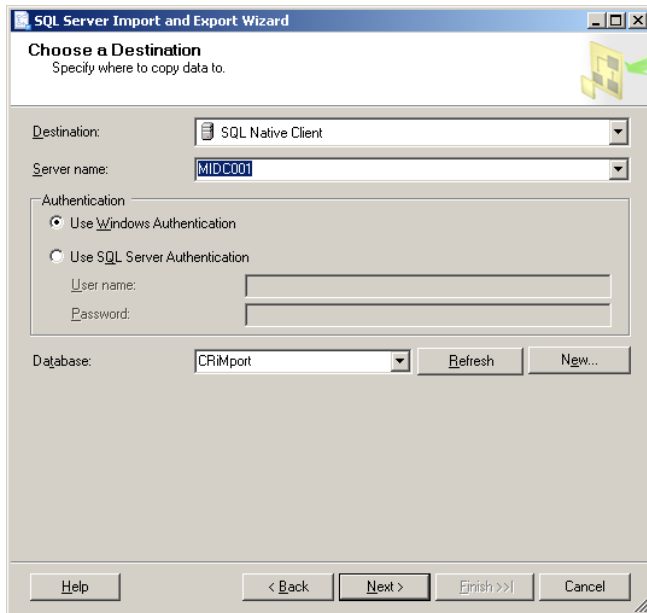
If you are using Microsoft® SQL Server 2005:

1) On your machine run **dtswizard.exe** (it is not necessary to specify full path). A new window will appear. If Welcome Page is shown click **Next**, the “**Choose a Data Source**” page will appear:



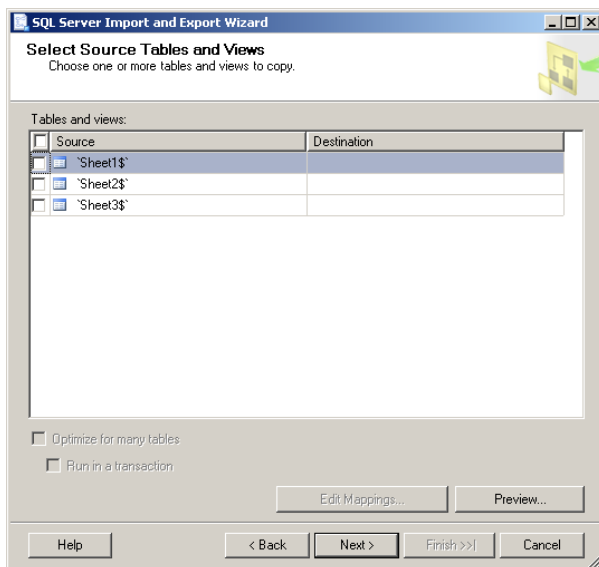
2) Select the provider needed to access your data source and all the necessary information needed by that provider. In the example above we have selected *Microsoft Excel* provider and we've pointed it to an Excel file named *OpportunityList.xls*. Once you've finished click “**Next**”.

3) On “**Choose a destination**” page leave the default destination (*SQL Native Client*) and fill the remaining information with the name of your SQL Server (the one containing CRiMport database) and login information. If you’re using a Domain User Account with full privileges on CRiMport database you can leave the default option *Use SQL Server Authentication*.

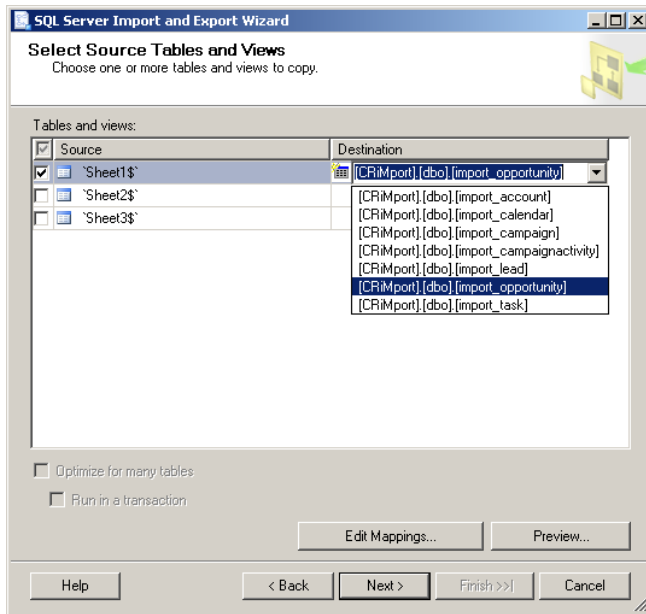


4) Now you can choose to *Copy data from one or more tables and views* or to *Write a query to specify the data to transfer* (for more information about queries look at Appendix 1).

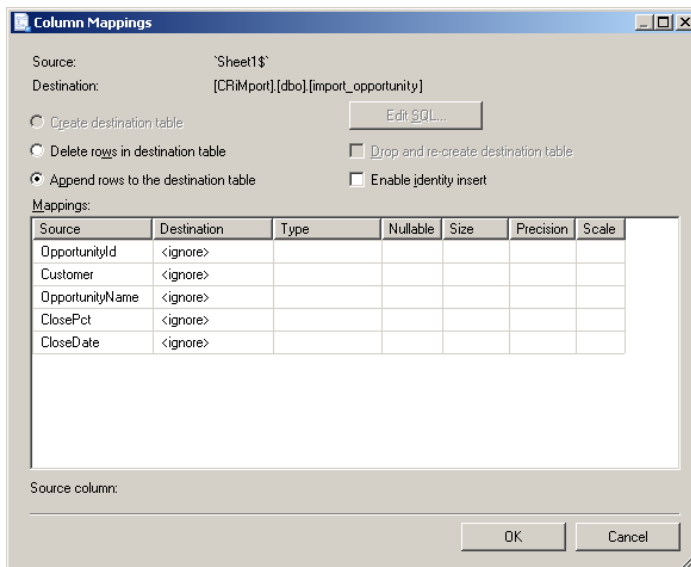
If you choose the first option the “**Select Source Tables and Views**” will appear:



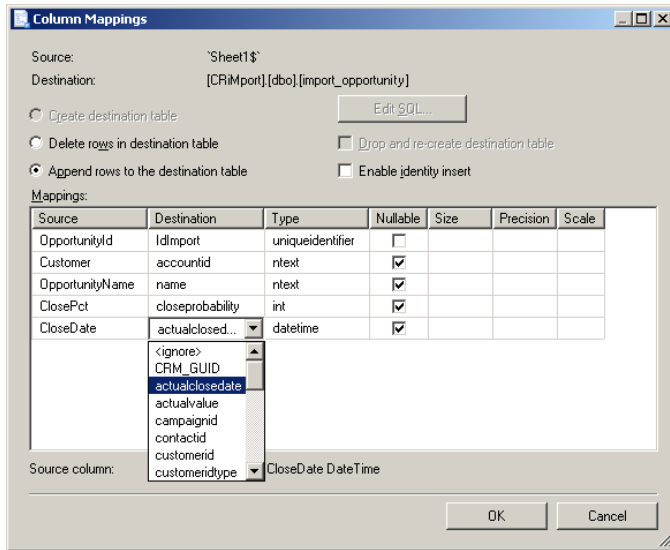
By selecting table(s) you want to import the column Destination will become editable. Choose in that column the CRiMport database table that represent the entity you want to import.



5) Once you've selected both Source and Destination tables click on the button **Edit Mappings...**
The **"Column Mappings"** page will appear:

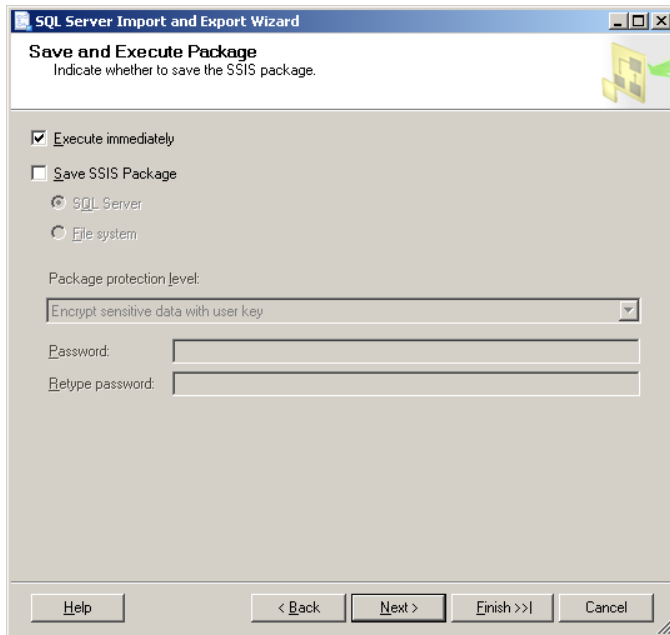


In the **Mappings** grid select the correct Destination Attribute that corresponds to source attribute. Do it for each attribute you want to import:



Once you've finished click "OK" and then click "Next".

6) Now you can choose to run import process immediately or to save it for later execution:



Appendix 1: Using query to specify the data to transfer

If you have good knowledge of source database(s) you can create your custom queries to populate CRiMport staging database. It can be done choosing *Write a query to specify the data to transfer* option when it will be requested (Par. 4):

